

1

2

3

4

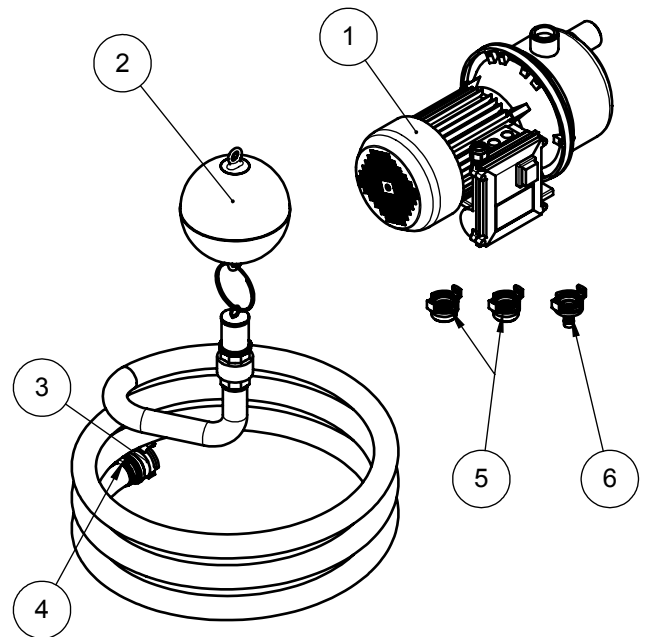
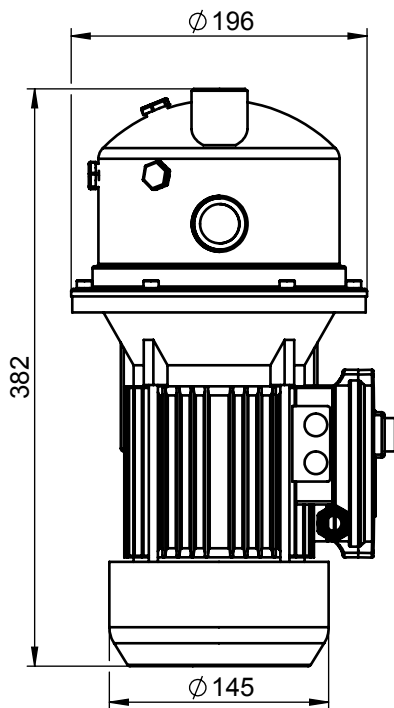
A

SCALE 1 : 10

B

C

D



Pump specification / Pumpe technische Daten

Maximum head / Max. Foerderhoehe: 38 m
 Maximum output / Max. Foerdermenge: 50 l/min
 Maximum power / Max. Leistung: 800 W
 Maximum working pressure / Max. Arbeitsdruck: 3,8 bar
 Maximum suction depth / Max. Saugtiefe: 8 m
 Voltage / Spannung: 230 V
 Frequency / Frequenz: 50 Hz
 Connections / Anschlusse: 1

Including floating suction filter with 5m hose /
 Inklusive schwimmendem Ansaugfilter mit 5m Schlauch

Pos.	Item-No.	Index	Item name	QTY.
1	1015827	001	Centrifugal JET pump	1
2	1027654	001	Floating suction filter with 5m hose	1
3	1067119	001	Suction and high pressure coupling 1 inch hose	1
4	1067278	001	Hose clamp	1
5	1067137	001	Adapter coupling 1 inch AG	2
6	1067133	001	Adapter coupling 0.5 inch hose	1

local article number: 103150



ACO Hochbau
 Vertrieb GmbH
 24755 Rendsburg, Postfach 320
 Tel. +49 4331 354-410
 Fax. +49 4331 354-360
 www.aco-hochbau.de

created by:
 mbartsch

drawing-no.:

1052405-M

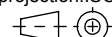
index:

001

documenttype:

marketing drw.

projection:ISO-E



scale:

1:5

title:

ACO Rain4me
 Centrifugal jet pump, set
 Jet Kreiselpumpe, Set

serial-released

The reproduction, distribution and utilization of this document as well as the communication of its contents to others without express authorization is prohibited. Offenders will be held liable for the payment of damages. All rights reserved in the event of the grant of a patent, utility model or design. Observe copyright by ISO 16016

release date:

2018-08-21 11:03

sheet:

1/1